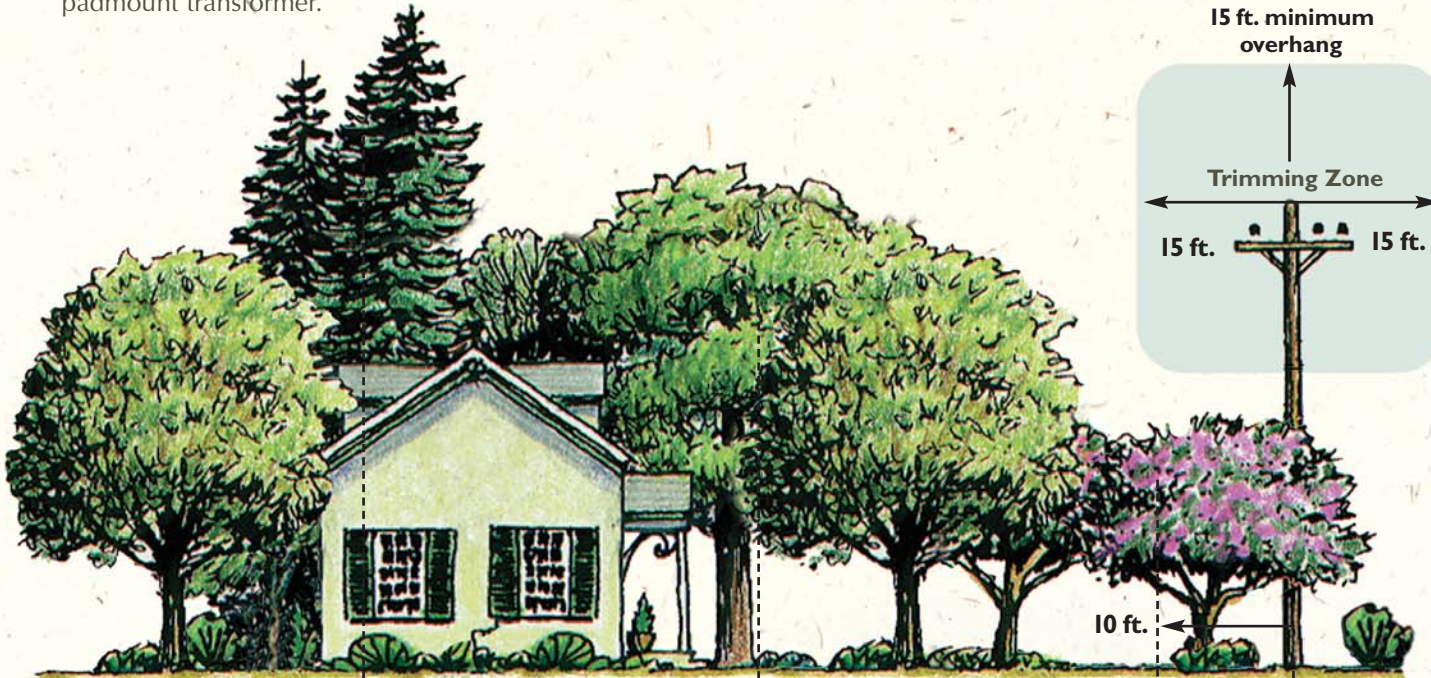
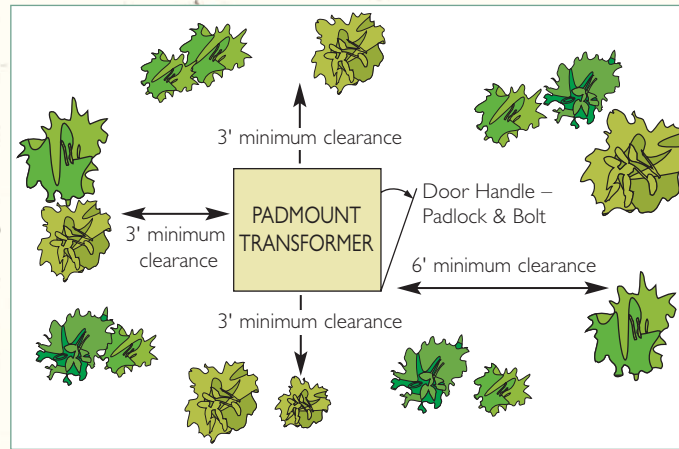


SELECTING THE RIGHT TREE OR SHRUB

Use these illustrations to help determine which tree or shrub is right for your property and your neighborhood before you plant.

- Be sure to look up and down. Trees grow to varying heights and spread at their maturity.
- Consider the tree's or shrub's location relative to power lines, both overhead and underground.
- In neighborhoods where NES installs underground utilities, please follow the guidelines to the right if you are considering planting shrubs around the padmount transformer.



Large Tree Zone - Mature height is 60 feet and taller (Hackberry, Silver Maple, Pine, Sycamore, Poplar, Ailanthus) - Plant at least 45 feet from pole, street light or NES equipment.

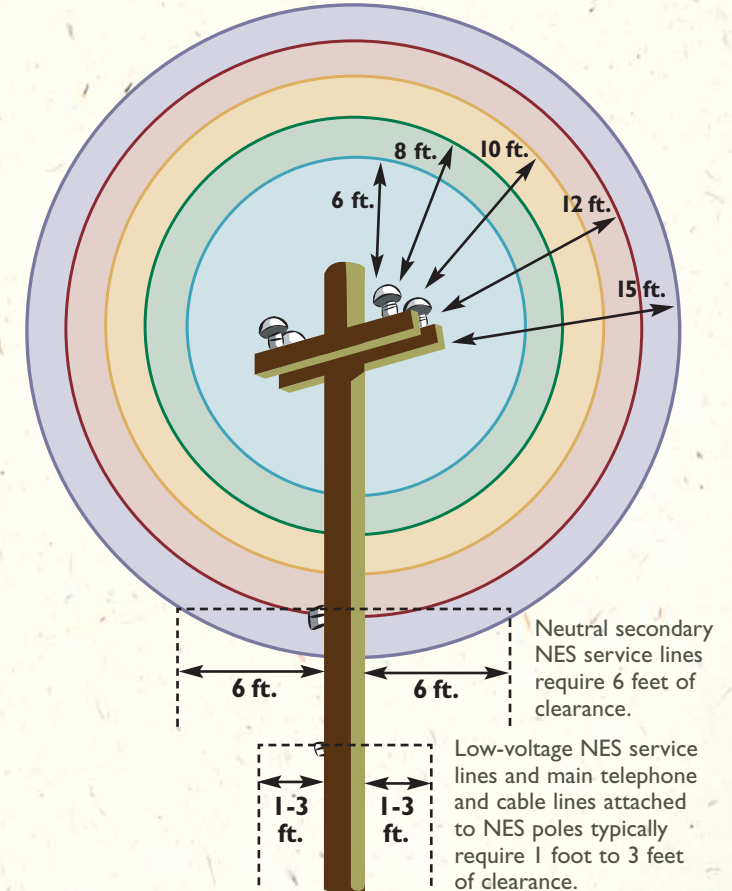
Medium Tree Zone - Mature height is 50 feet (Oak, Spruce, Sugar Maple, Elm, Hickory, Linden) - Plant at least 35 feet from pole, street light or NES equipment.

Small Tree Zone - Mature height should not exceed 20 feet (Cedar, Magnolia, Dogwood, Hawthorn, Crabapple) - Plant at least 10 feet from pole, street light or NES equipment.

Shrub Zone - Plant 3 feet to 10 feet from pole.

NES MINIMUM CLEARANCE STANDARDS

The degree to which a tree is trimmed depends on several factors: the tree species, voltage of surrounding power lines, and the proximity of power lines to those branches.



15' CLEARANCE - NES Transmission Lines

12' CLEARANCE - Hackberry, Silver Maple, Pine, Sycamore, Poplar, Ailanthus

10' CLEARANCE - Elm, Hickory, Linden

8' CLEARANCE - Oak, Spruce, Sugar Maple

6' CLEARANCE - Cedar, Magnolia