

Nashville's Ash Trees Are Under Threat!

The Emerald Ash Borer (EAB) is attacking all species of North American ash trees and unless treated, it will kill them all before the year 2026. No ash tree is immune to the devastating effects of this insect which has been in Davidson County since 2014 and Tennessee since 2010.

What Is EAB? It is a metallic green, invasive Asian beetle which feeds on ash trees. The larvae feed under the bark and cut off the flow of water and nutrients. The tree can die in one to three years after the first symptoms of infestation appear.



Actual Size

Do I Have An Ash Tree?



Smooth young bark.



Diamond-patterned mature bark.



Oar-shaped seeds usually occur in clusters and hang on female trees from mid-summer until early winter.



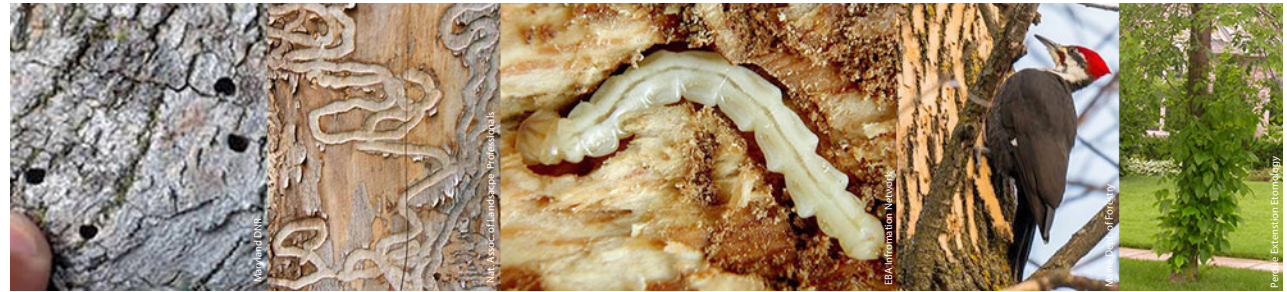
Opposite branching pattern.

Leaves have five to eleven leaflets with toothed or smooth edges on a short stalk.

FL Dept of Ag

Princeton Treecare

Is My Tree Infested?



D-shaped exit holes

S-shaped larval galleries

Larva

Bloning

Sprouts at base

A declining crown with leaf loss and dying branches is often the first visible sign. Adult beetles exit the tree through distinctive D-shaped, pencil-sized holes. Peeling back the bark reveals characteristic serpentine galleries.

Woodpeckers stripping off the bark to feed on larvae make a light-colored patch on the trunk called bloning or flecking, easily seen in winter. Small sprouts growing from the tree roots or trunk are another sign.



0% Dieback



30% Dieback



50% Dieback



80% Dieback

Management Options

Treat it. Sustained insecticide control requires soil or bark treatments every year, or injection treatments every two years for the remaining healthy life of the tree. This option is best for larger or historic trees. Treatments may be applied by the homeowner or a licensed professional. It's best to treat your tree before it is infested to help build resistance. Insecticide is most effective in the first year of infestation. Once there is more than 30% dieback of the crown, treatment may not be effective. For treatment options go to trees.nashville.gov.

Let it die. If the tree is in the woods or an open area where its fall would not block access or cause physical or property damage, you can let it die naturally in place and decompose.

Remove it. You can be proactive and have your tree cut down before it dies. If it is not accessible by a bucket truck, then it needs to be cut down before it becomes too brittle to climb. Infested ash trees can present a safety concern.

Tree Owner's Responsibilities

The State of Tennessee and insurance companies protect owners of healthy trees that damage others' property as a result of acts of nature like tornadoes.

EAB-infested trees, whether dead or unhealthy, can be deemed hazardous and any damages may become the responsibility of the tree owner if the tree's poor health status was apparent.

Your tree. It is essential to identify any at-risk trees, evaluate the potential for damage and danger to others, manage your sick trees, and monitor them for safety.

Your neighbor's tree. Communication over shared trees is essential. You have the right to trim branches that extend into your yard from your neighbor's tree as long as it does not harm your neighbor's tree. Work with your neighbor to prune them using proper techniques. Uncooperative tree owners can be notified of protective actions through a certified letter or a witnessed verbal communication.

Boundary tree. A tree that shares any part of the trunk with two property owners. In this case, it is up to both property owners to work together to make decisions about the health and care of the tree.

Right-of-way tree. This utility easement is generally the area between the back of a water meter box, utility pole or the sidewalk to the street. Metro Nashville Public Works will respond to tree health issues for trees in the right-of-way, even if the tree trunk is only partially in this area. Call hubNashville at 615-862-5000 or 311 to report an ash tree in the right-of-way.

Note: This information is not intended to be legal advice. Consult an attorney or insurer for details of your coverage for liability.

For More EAB Information

EAB Information in Nashville - trees.nashville.gov

Tree Debris Disposal

Storing infected ash wood, without grinding, furthers the spread of EAB. Trees must be chipped to a maximum one square inch to destroy the EAB's ability to live. Metro Nashville's Brush Collection program meets this standard.

Residential property receives four brush pick-ups per year. Davidson County residents may also take their yard brush for free to: **East Side: 1511 Elm Hill Pike or West Side: 6401 Centennial Blvd.** Pickup truck loads ONLY, no trailers.

The Metro Brush Collection program is not for commercial properties or to be used by the professional tree care industry.

Be Sure to Replant!

Recommended Tree List: trees.nashville.gov. Plant a variety of trees for a healthy community forest. Consider the mature tree height and width for your planting location. During the first three years, trees need deep watering throughout the growing season.

Tips on Hiring an Arborist

- Ensure that the company is qualified to do the work.
- Arborist Certification is through the International Society of Arboriculture.
- Ask for proof of worker's compensation, liability insurance and references.
- Get written bids with start and completion dates.
- Make sure cleanup and proper disposal are included.
- Determine the hourly rate for additional services if needed.
- Get detailed contracts with signatures.

**Metropolitan Nashville Public Works and
Metro Tree Advisory Committee**

Brochure Design- Ashworth Environmental Design, LLC 2018

