



# NES POWERING SAFE COMMUNITIES

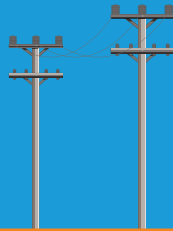
We know how important it is to have safe and reliable power to make your life run smoothly. That's why tree trimming is so vital. Since the program began, tree-related outages have dropped significantly.

## Tree Trimming Guidelines

Our goal is to keep trees healthy while making sure they do not interfere with electrical equipment. The amount of tree trimming depends on several factors:



**TREE SPECIES**



**VOLTAGE OF SURROUNDING POWER LINES**



**PROXIMITY OF TREE BRANCHES TO POWER LINES**

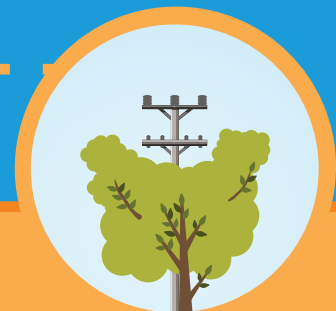
### REQUIREMENTS

## Tree Clearance

NES follows a lateral pruning method. This method keeps the overall structure of the tree strong and more resistant to high winds and heavy ice. At the same time, it directs growth away from power lines.

### "V" PRUNING

When utility wires run through a tree, a v-cut is made to allow branches on either side of the wire to grow naturally.

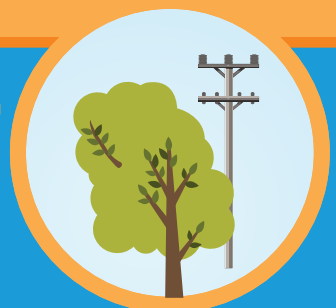


### BEST PRACTICES

NES does not "top" or "round" trees because this practice is discouraged by the National Arbor Day Foundation.

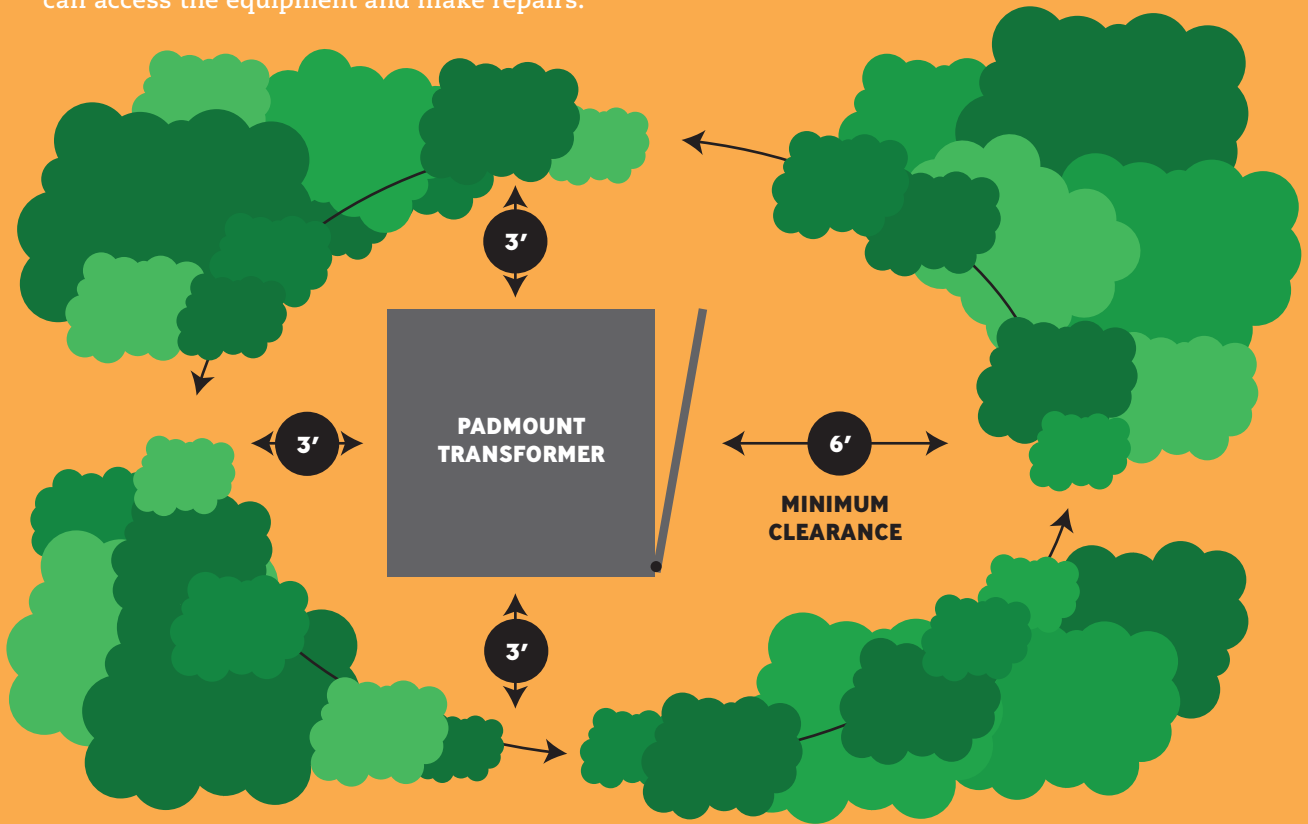
### SIDE PRUNING

Interfering side branches are removed from trees adjacent to power lines.



# Padmount Transformers

A six foot minimum clearance is required in front of the transformer door so that crews can access the equipment and make repairs.



## Debris Removal



### ROUTINE TRIMMING

During normal trimming projects, our contractors will remove and/or chip the tree limbs and debris from the customer's property.

### EMERGENCY TRIMMING

NES does not remove tree debris caused by a storm or emergency situation. Crews may need to cut broken and uprooted trees to make repairs to our lines, but it is the responsibility of the property owner to remove the tree debris.



**NES**

Visit [NESPower.com](http://NESPower.com) or call **615.695.7400** to learn more.